

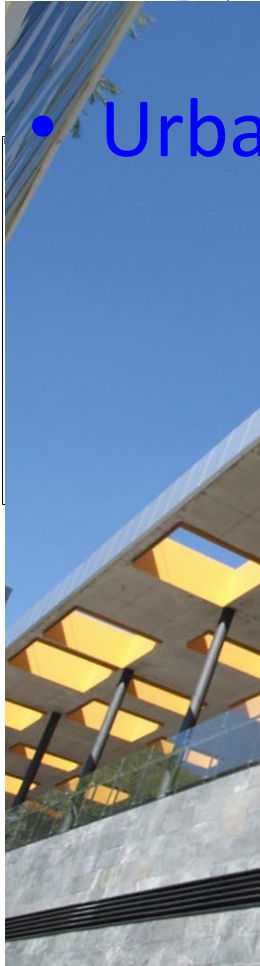
# Two different stations in the New HSLine Madrid-East Coast

Javier DAHL SOBRINO

ADIF

Director Técnico

# New HSLine Madrid-Valencia/Albacete



- Urban Stations



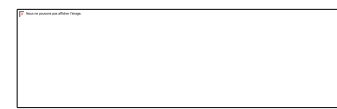
UENA  
VALENCIA

ALICANTE

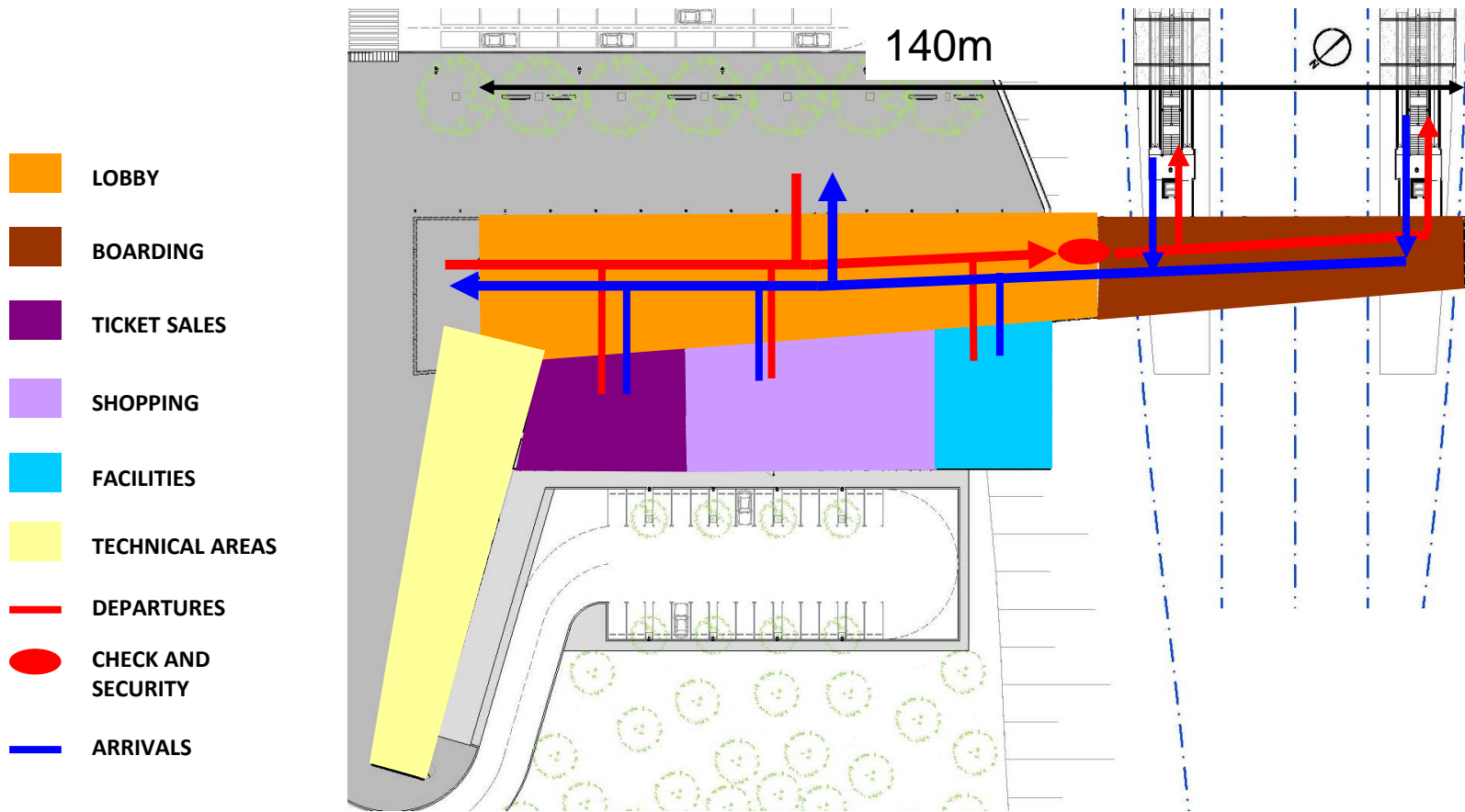


- Stations far from urban areas

UENA

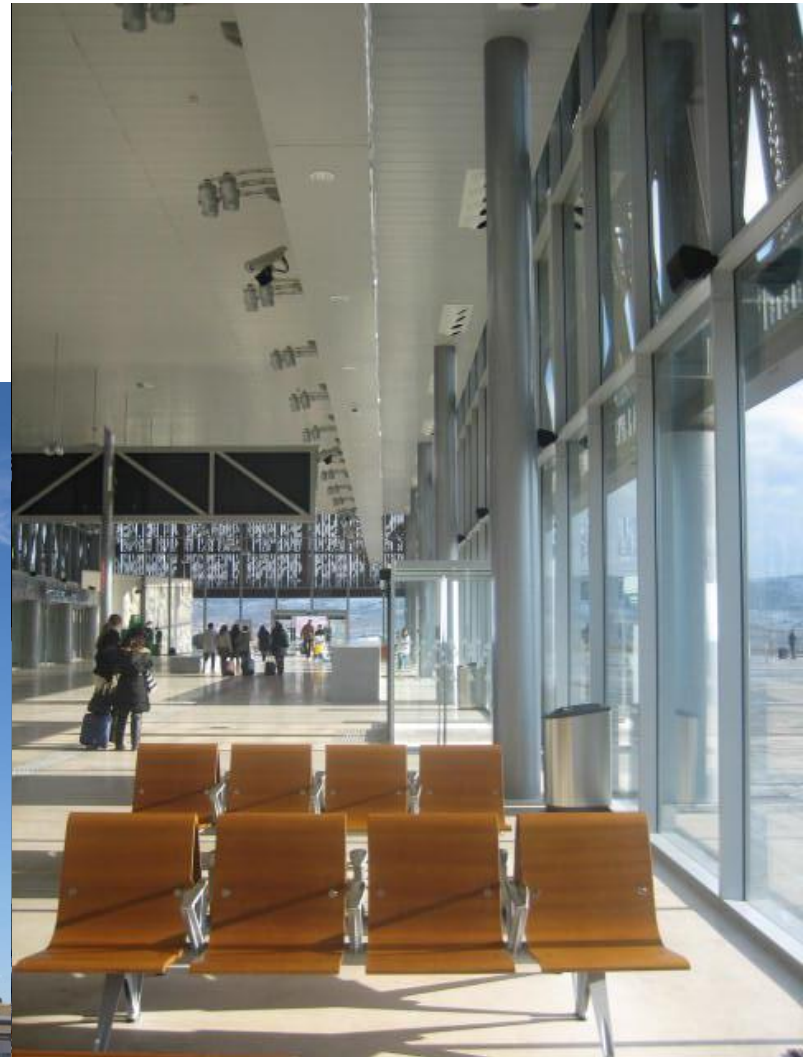


# Cuenca Fernando Zóbel



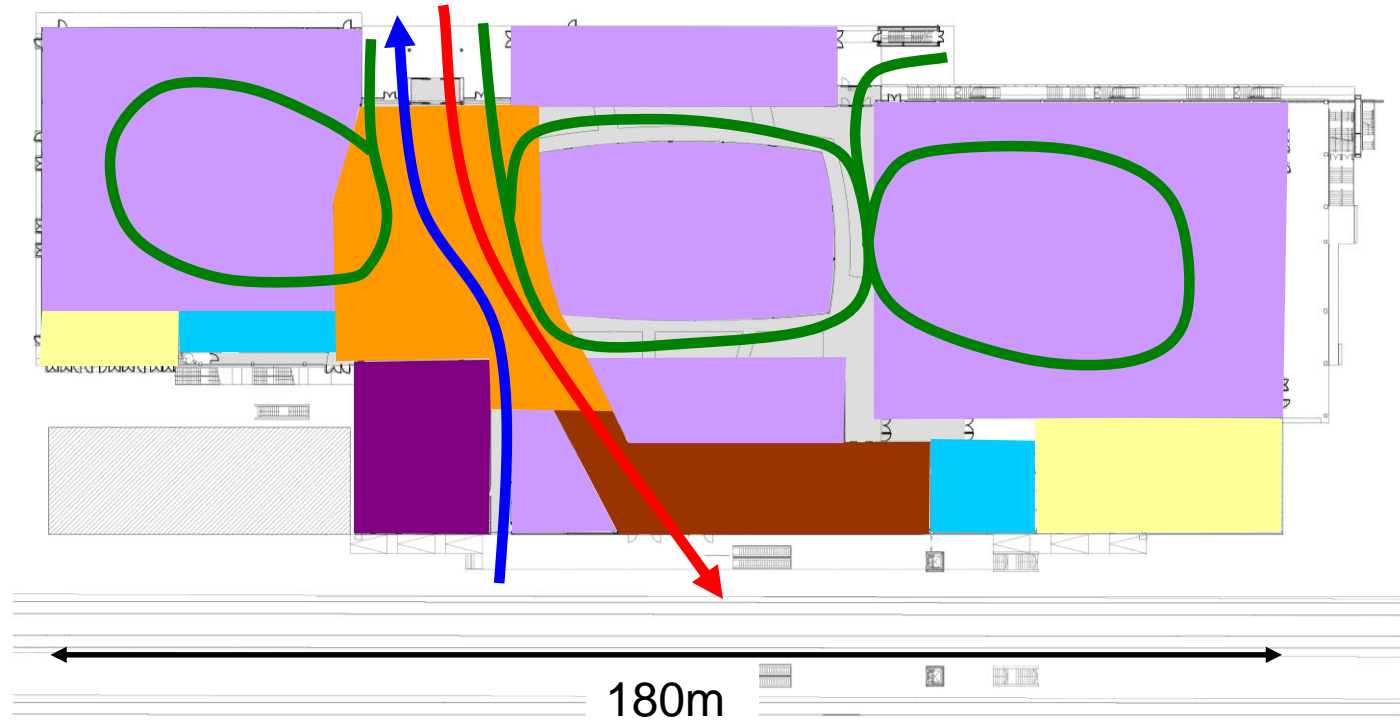
# Cuenca Fernando Zóbel

- Characteristics
  - Extraordinary orientation
  - Environmentally sustainable



# Albacete Los Llanos

-  LOBBY
-  BOARDING
-  TICKET SALES
-  SHOPPING
-  FACILITIES
-  TECHNICAL AREAS
-  DEPARTURES
-  CHECK AND SECURITY
-  ARRIVALS
-  COMMERCIAL ROUTE



# Albacete Los Llanos

- Characteristics
  - Economically sustainable
  - Environmentally sustainable





# nextstation

BRUSSELS 2011

March 17-18

